



Single and Double Powerhead Operator's and Service Manual



CONTENTS

INTRODUCTION•	3
SPECIFICATIONS•	3
SAFETY•.....	4
GENERAL SAFETY•	4
<i>OPERATING SAFETY</i> •.....	4
<i>STORAGE SAFETY</i> •	5
<i>REFUELING SAFETY</i> •	5
<i>OIL LEVEL CHECK</i> •.....	5
POWER UNIT ASSEMBLY•	6
<i>PRE-ASSEMBLY</i> •	6
FINAL ASSEMBLY•	6
<i>HANDLE ASSEMBLY</i> •	6
<i>THROTTLE ASSEMBLY</i> •.....	7
<i>WEIGHT ADJUSTMENT</i> •	8
<i>OTHER SETTINGS</i> •.....	8
<i>THROTTLE CABLE ADJUSTMENT</i> •.....	9
<i>ATTACHING THE SCREED BAR</i> •	9
<i>SERIAL NUMBER LOCATION</i> •.....	10
NOTES•	10
LIMITED WARRANTY•	11

Power Head #1 Model _____

Power Head # 1 Serial Number _____

Power Head #2 Model _____

Power Head # 2 Serial Number _____

Screed Bar Model _____

Screed Bar Serial Number _____

Date Purchased _____

INTRODUCTION

Congratulations on your choice of a Wyco Screed King power screed to complement your construction operation. This equipment has been designed and manufactured to meet the needs of a discriminating buyer for the efficient finishing of concrete.

Safe, efficient and trouble free operation of your Wyco Screed King power screed requires that you and anyone else who will be operating or maintaining the screed, read and understand the Safety, Operation, Maintenance and Trouble Shooting information contained in the Operator's Manual.

Keep this manual handy for frequent reference and to pass on to new operators or owners. Call Wyco Tool or your dealer if you need assistance or information.

Operator Orientation - The directions left, right, front and rear as mentioned throughout this manual, are as seen from behind the machine, standing between the handles.

SPECIFICATIONS

Engine	GX35 Mini 4-Stroke		
Starting Mechanism	Recoil		
Maximum Power Output	1.5 HP @ 7000 RPM		
Handle Design	Vibration reducing, quick adjusting		
Fuel Capacity	0.17 U.S. Gallon (0.644 Liter)		
Oil Capacity	3.4 ounce U.S. Liquid (0.1 Liter)		
Sound Pressure	87-90 dB(A) @ 5500 RPM		
Vibration (m/sec2)	7.4 m/sec @ 5500 RPM in 4" slump concrete		
Power Head Weight		Lbs.	Kg
	Single Powerhead alone	27	12.25
	Dual Powerhead alone	54	24.25
Screed Bar Weight		Lbs.	Kg
	4 foot screed bar	8	3.63
	5 foot screed bar	10	4.54
	6 foot screed bar	12	5.44
	8 foot screed bar	15	6.80
	10 foot screed bar	19	8.62
	12 foot screed bar	22	9.98
	14 foot screed bar	26	11.79
	16 foot screed bar	29	13.15
	16 foot screed bar (double power unit)	31	14.10
	18 foot screed bar (double power unit)	33	14.97
	20 foot screed bar (double power unit)	37	16.78

SAFETY



YOU are responsible for the SAFE operation and maintenance of your Wyco Screed King power screed. YOU must ensure that you and anyone else who is going to operate, maintain or work around the screed be familiar with related SAFETY information contained in this manual. This manual will take you step-by-step through your working day and alerts you to all good safety practices that should be adhered to while operating the screed.

Remember YOU are the key to safety. Good safety practices not only protect you but also the people around you. Make these practices a working part of your safety program. Be certain that EVERYONE operating this equipment is familiar with the recommended operating and maintenance procedures and follows all of the safety precautions. Most accidents can be prevented. Do not risk injury or death by ignoring safety practices.

* Screed owners must give operating instructions to operators or employees before allowing them to operate the machine, and at least annually thereafter.

* The most important safety device on this equipment is a SAFE operator. It is the operator's responsibility to read and understand ALL Safety and Operating instructions in the manual and to follow these. All accidents can be avoided.

* A person who has not read and understood all operating and safety instructions is not qualified to operate the machine. An untrained operator exposes himself and bystanders to possible serious injury or death.

* Do not modify the equipment in any way. Unauthorized modification may impair the function and/or safety and could affect the life of the equipment.

GENERAL SAFETY

1. Read and understand the Operators Manual and all safety signs before operating, maintaining, adjusting, servicing or cleaning the screed.



2. Only trained competent persons shall operate the screed. An untrained operator is not qualified to operate the machine.

3. Have a first aid kit available for use should the need arise and know how to use it.



4. Have a fire extinguisher available for use should the need arise and know how to use it.



5. Wear appropriate protective gear. This list includes but is not limited to:

- A hard hat
- Protective boots with slip resistant soles
- Protective goggles
- Heavy gloves
- Hearing protection



6. Stop engine, disconnect spark plug wire and wait for all moving parts to stop before servicing, adjusting, repairing or cleaning.

7. Wear appropriate hearing protection when operating for long periods of time



8. Review safety related items with all personnel annually.

OPERATING SAFETY

1. Read and understand the operators manual and all safety signs before operating, servicing, adjusting or cleaning the screed.

2. Clear the area of all bystanders before starting.

3. Keep hands, feet, hair and clothing away from moving parts.
4. Stay away from hot engine components during operation.
5. Do not run screed in an explosive atmosphere or in a poorly ventilated or enclosed area.
6. Stop engine, disconnect spark plug wire and wait for all moving parts to stop before servicing, adjusting, repairing or cleaning.
7. Do not smoke when refueling gas engine.

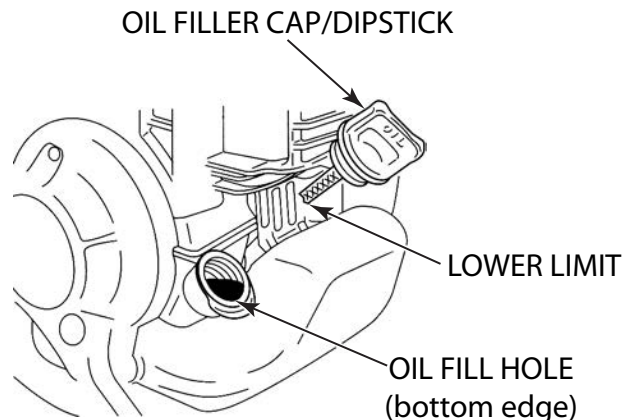
STORAGE SAFETY

1. Store unit in an area away from human activity.
2. Do not permit children to play around the stored screed.

REFUELING SAFETY

1. Handle fuel with care. It is highly flammable.
- 2 This is a four cycle engine, use non-mixed gasoline of no less than **87 octane**.
3. Allow engine to cool for 5 minutes before refueling. Clean up spilled fuel before restarting engine.
4. Do not refuel the machine while smoking or when near open flame or sparks.
5. Always use an approved fuel container.
6. Fill fuel tank outdoors.
7. Prevent fires by keeping machine clean of accumulated trash, grease and debris.

OIL LEVEL CHECK



OIL FILLER HOLE LOCATION

It is important that the engine oil level be maintained at the correct level. High or low oil levels will cause permanent damage to the engine requiring replacement. To check the oil level:

1. Place the screed board on a flat level surface. This will ensure that the engine is in the proper orientation to perform an oil level check
- 2 Carefully unscrew the oil filler cap/dipstick and wipe it clean.
3. Insert and remove the oil filler cap/dipstick without screwing it into the oil reservoir neck, then remove it to check the oil level shown on the dipstick.
4. If the oil level is near or below the lower limit mark on the dipstick, fill the reservoir to the bottom edge of the oil fill hole with the recommended oil (see Honda engine owners manual). To avoid overfilling or underfilling, be sure the engine is in a level position as shown when adding oil
5. Reinstall the oil filler cap/dipstick and tighten securely..

Notice: Running the engine with a low oil level can cause engine damage. This type of damage is not covered by the warranty.

POWER UNIT ASSEMBLY

PRE-ASSEMBLY

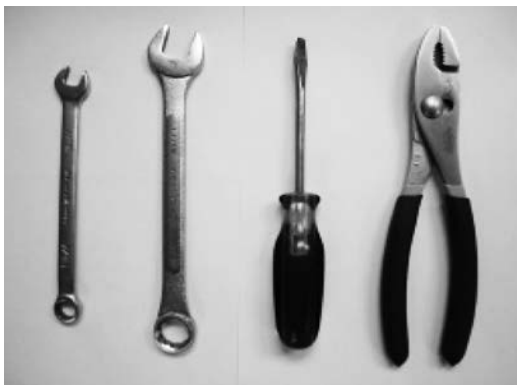
1. Check box to make sure all parts were received and undamaged.



COMPONENTS IN SHIPPING CONTAINER

2. The tools you will require for assembly are:

- (1) $\frac{7}{16}$ " Open or box end wrench
- (1) $1\frac{1}{16}$ " Open or box end wrench
- (1) #2 Flathead screwdriver
- (1) Slip joint pliers



REQUIRED TOOLS

FINAL ASSEMBLY

HANDLE ASSEMBLY

Remove the handles from their shipping position by removing the two top $\frac{7}{16}$ " nuts, the quick release levers and the top handle cap.

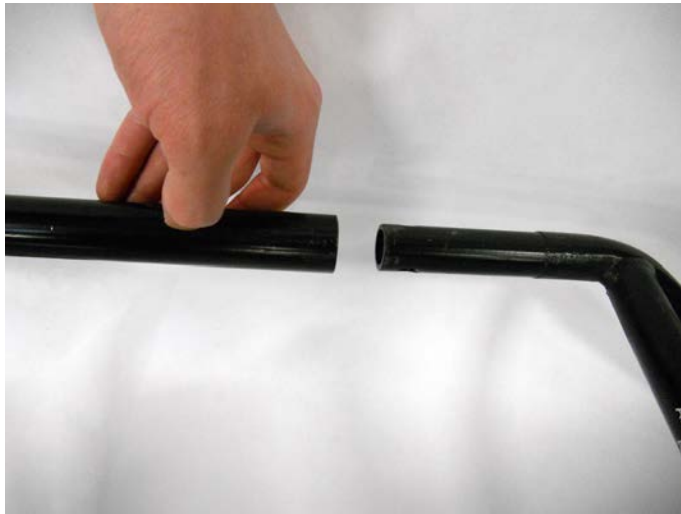


HANDLE PLATE POSITIONING

Insert the bottom of the handles into the back of the handle plate and replace the top handle cap over the handle. Thread on the two top $\frac{7}{16}$ " nuts. Then install the quick release levers on the top of each bracket. Placing the black hand levers in the lower position will result in handlebar movement.

With the lever in the open position thread it through the cap, handle plate and quick release nut, continue threading until tight. When hand tight place the handles at the appropriate height and close the lever.

Add the upper handle sections to the lower handle section and secure with the two $\frac{5}{16}$ " fasteners supplied.



UPPER HANDLE INSERTION



FASTENING UPPER HANDLE

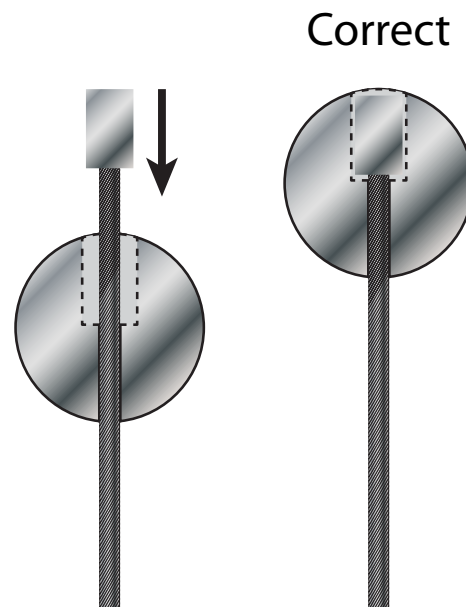
THROTTLE ASSEMBLY

Place the throttle lever on the left hand handle just below the hand grip. Position the lever so it clears the handle guard in all positions. Place the lever ring clamp around the handle bar and tighten with a flathead screwdriver and adjustable pliers. Use the zip ties provided to keep the throttle cable tight to the handle bars.

Check to make sure the throttle adjustment cable's, cable stop is fully seated into the throttle adjustment linkage on the carburetor. The metal cable stop should be completely inside the throttle adjustment linkage as shown.

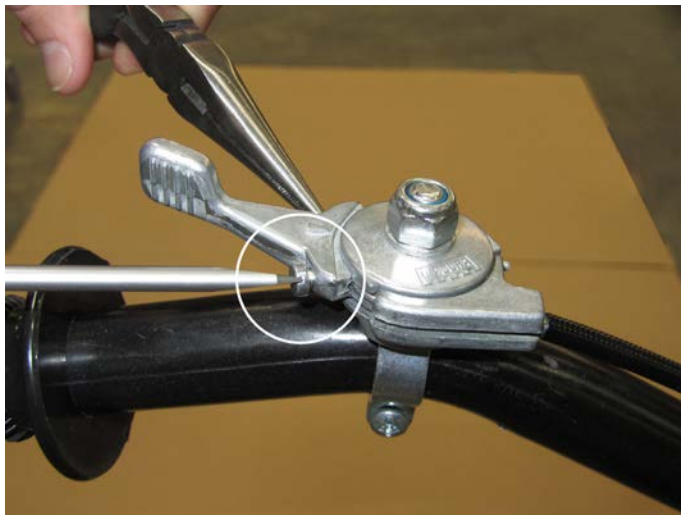


THROTTLE ASSEMBLY LOCATION



THROTTLE ASSEMBLY DETAIL

If the cable stop is not fully seated, loosen the throttle control adjustment screw and grab the end of the adjustment cable with the slip joint pliers. Pull gently on the cable until the cable stop is completely within the throttle adjustment linkage.



THROTTLE ASSEMBLY CONNECTION

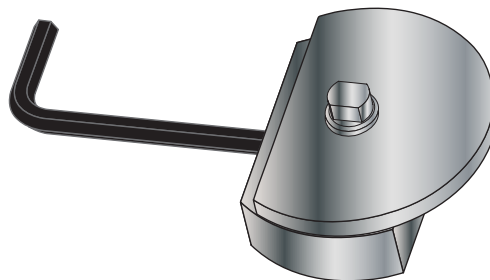
With the throttle lever pushed to the far right hold the throttle adjustment cable so there is no slack and then tighten throttle control adjustment screw to clamp the cable in place.

WEIGHT ADJUSTMENT

The eccentric weight on the power head is factory set to its maximum force. This setting will settle concrete with a 2" to 8" slump. The only time weight should be adjusted is when the screed is going to be used on unusually high slump concrete.

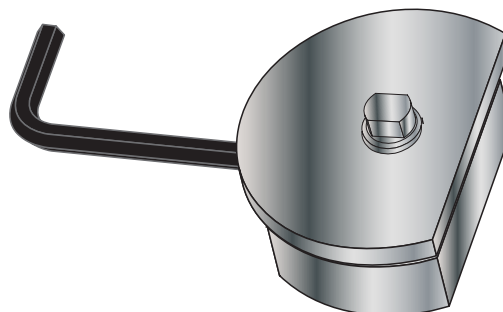
To change the force of vibration, adjust the position of the eccentric weight as follows. Using a 1/4" Allen key loosen the set screw on the thicker weight. While holding the thick weight stationary with the Allen key turn the thin weight by hand to the desired position.

Turning the thin weight clockwise decreases the force, it is zero when the flat edge of the thin weight is parallel to the flat edge of the thick weight with the set screw.



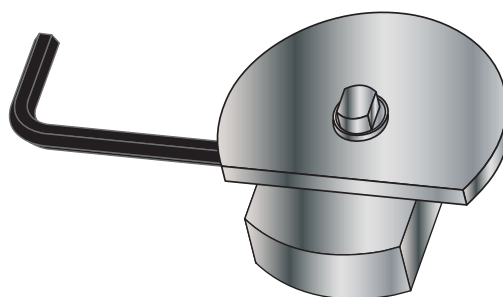
LEAST VIBRATION

Turning the thin weight counter clockwise increases the force of vibration until the flat edge of the thin weight is flush with the opposite edge of the thick weight.

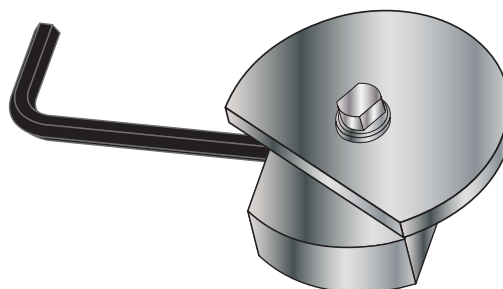


MAXIMUM VIBRATION (FACTORY SETTING)

OTHER SETTINGS



$\frac{3}{4}$ VIBRATION



$\frac{1}{2}$ VIBRATION

THROTTLE CABLE ADJUSTMENT

The throttle cable on the Screed King comes pre-assembled for your convenience. Over time you may notice that it takes more clicks on the throttle to get to optimum RPM level than when you first ran the screed. This is normal, over time your throttle cable will stretch.

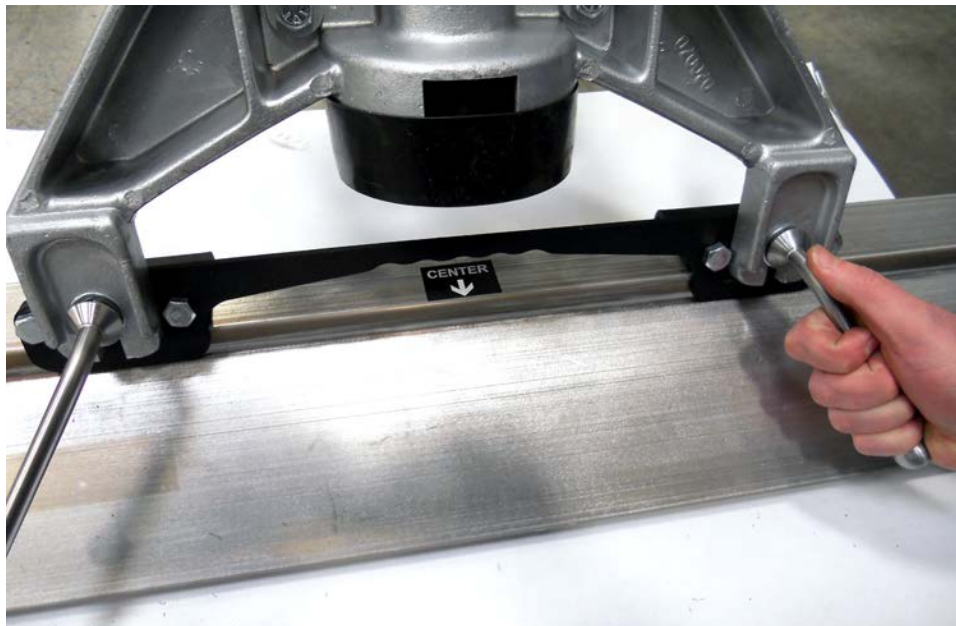


THROTTLE CABLE ADJUSTMENT

To adjust your throttle cable to compensate for this stretching, simply locate the barrel adjuster where the cable runs into the underside of the engine and turn it counterclockwise with a 8 mm wrench. Tighten the locknut to hold it in the desired position.

ATTACHING THE SCREED BAR

Locate the threaded studs on the screed bar and loosen the locking handles. Slide the power head of the screed over the threaded studs. Fasten the power head to the bar using the locking handles and washers provided, as shown below. The washer and lock-washer should contact the silver handles when installing the power unit. Make sure to tighten the bolts fully so they do not vibrate loose during use.

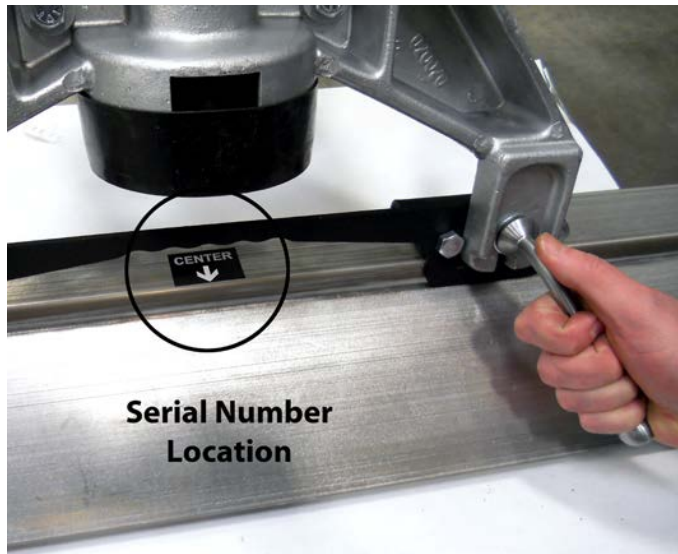


ATTACHING THE SCREED BAR

SERIAL NUMBER LOCATION

NOTES

Always give your dealer, distributor or factory the serial number of your power screed when ordering parts or requesting service or other information.



SCREED BAR SERIAL NUMBER LOCATION

The board serial number is stamped above the "CENTER" sticker.



POWER UNIT SERIAL NUMBER LOCATION

The power head serial number is stamped in the casting as shown above. Please record both serial number on the inside of the front cover in the space provided.

LIMITED WARRANTY

WYCO Tool, a Division of Racine Federated Inc. warrants that the products manufactured by it, when properly assembled, used and maintained, shall be free from defects in material or workmanship, and will perform according to the manufacturer's specifications under normal conditions, subject to the limitations stated in this Manufacturer's Limited Warranty.

WYCO's obligation under this warranty shall be limited to repairing or replacing the part or parts, or, at WYCO's option, the products that prove defective upon return to the manufacturer's factory. Cost of transportation and other expenses connected with replacing parts are not covered.

WYCO's obligation under this warranty is limited to a period of 24 months from the date of purchase for the power head and 90 days for the screed bar. For the warranty to be valid the registration card must be completion and return within 30 days of shipment of the Screed King power screed.

Written authorization from WYCO is required before any product can be returned for warranty consideration. Always obtain a RGA number (Return Goods Authorization) and include it in the address before returning any parts for warranty consideration or chargeable repair.

WYCO is not liable for any consequential damages or any contingent liabilities arising out of the failure of product manufactured by it, or any component part or accessory.

This Manufacturer's Limited Warranty is in lieu of all other warranties. All other warranties, either express or implied, arising by operation of law, course of dealing, usage of trade or otherwise are excluded.

THERE ARE NO IMPLIED WARRANTIES OF MERCHANTABILITY OR FITNESS FOR A PARTICULAR PURPOSE.

No agent, representative or distributor has any authority to alter the terms of this warranty in any way.

See our complete statement of warranty at www.wycotool.com

